



MINUTES OF THE COMBINED MEETING OF RURAL COMMUNITIES COMMITTEE AND STAKEHOLDER COMMITTEE Held July 28, 2025

GKGSRA Rural Community Committee Chair Tantau called to order a meeting of the Combined Rural Communities and Stakeholder committees.

MEMBERS' PRESENT:

RURAL COMMUNITIES

Chris Tantau
Bobby Lentz
Emmanuel Llamas

STAKEHOLDER

Marty Toomey
Joe Cardoza
Zack Stuller
James Silva
Jonathan Vaughn
Matt Hutcheson
Blake Mauritsen
Marty Toomey
Soapy Mulholland

MEMBERS ABSENT:

RURAL COMMUNITIES

Danny Holguin
Monroe Self
Rudy Mendoza
Carol Fina

STAKEHOLDER

Brian Watte
Cornell Kasbergen
John Gailey

i. CALL TO ORDER

Chair Tantau called the meeting of the Combined Rural Communities Committee and Stakeholder Committee to order at 1:30 PM.

ii. ROLL CALL

Roll call was taken for the meeting and documented above.

iii. PUBLIC COMMENT:

Public Comment from Emily at SRT.

Public comment was received from Geoff Vanden Heuvel regarding concerns on the water allocation system and trading flexibility.

July 28, 2025

iv. **APPROVAL OF MINUTES:**

The minutes of June 23, 2025, meeting was reviewed and approved a motion was carried out by Hutcheson and Mauritson and unanimously approved.

v.

vi. **GSA ADMINISTRATION:**

Stephanie Ruiz updated the committee on several administrative items:

- **New Office Location:** The GSA office is relocating to 227 NW Street. Setup is in progress, and the office will be open to visitors in August.
- **New Website:** A redesigned, mobile-friendly website is now live with downloadable, accurate documents. Feedback on any issues or inaccuracies is encouraged.
- **Unpaid Invoices:** An audit of 2023 billing revealed 95 unpaid invoices totaling \$565,000. These balances have been cleared from the books. The Board will discuss initiating a lien process at the next meeting.
- **Enforcement Measures:** Those who over-pumped into the prohibitive tier may face \$500 fines, future allocation reductions, and monetary liens. Persistent non-compliance could result in legal actions, including court injunctions and potential foreclosure after five years.

Public Comment received by Geoff Vanden Heuvel regarding concerns about the current allocation structure and its limited flexibility. He recommended:

Discussion Ensued

- Reducing distance restrictions on water trading.
- Addressing unused credit accumulation.
- Using more advanced tools, including AI, to track and visualize regional issues.

Discussion Ensued

vii. **KAWEAH SUBBASIN GROUNDWATER SUSTAINABILITY PLANS**

Mark Larsen provided an update on the Subsidence Management Plan recently released by DWR, emphasizing its focus on critical groundwater level thresholds (critical head) and active management within designated subsidence zones. He encouraged landowners and committee members to review the plan and provide feedback.

Mark noted that the State Water Board staff continues to recommend returning the Kaweah Subbasin to DWR oversight by fall 2025, pending progress on management efforts. Subbasin coordination is ongoing, with work being conducted by over nine focus groups, including small community well core teams and a groundwater quality core team.

Don Tucker offered additional insight into the efforts of these teams, highlighting their work to refine groundwater sustainability strategies, improve data collection, and address key challenges across the basin.

viii. **MITIGATION PROGRAM:**

Mark Larsen reported receipt of the sixth claim from Self-Help Enterprises, along with a map identifying approximately 24 dry wells clustered across Greater Kaweah. Six wells are currently in process. He noted that

July 28, 2025

the cost for the first completed well was significantly lower than expected, \$56,000 compared to the budgeted \$93,000. This cost does not include tanks or bottled water.

Discussion Ensued

ix. WY 2026 ALLOCATION:

Don Tucker presented on the GSA's allocation framework, explaining how water is distributed based on acreage, crop demand, and carryover provisions. He reviewed past practices with tiered allocations and described recent adjustments in response to reduced surface water supplies and increased reliance on groundwater. Tucker emphasized fairness and transparency in the allocation process, while also noting the challenges of drought and the need to balance state requirements with local realities. He highlighted the role of carryover, transfers, and credits in helping landowners manage their water budgets and stressed the importance of proactive planning as the agency prepares for stricter state oversight.

Discussion Ensued

x. SUBSIDENCE MONITORING AND MANAGEMENT:

Tom discussed GSA's role in the regional coordination effort to manage and mitigate land subsidence, a pressing issue across the Kaweah Subbasin. Subsidence not only affects groundwater sustainability but also threatens infrastructure such as irrigation canals, roadways, and water delivery systems.

A basin-wide dialogue is ongoing with Mid-Kaweah and East Kaweah GSAs to develop consistent metrics and strategies for subsidence. One major goal is to align sustainable management criteria (SMCs) across all three GSAs to meet state requirements while acknowledging the unique hydrogeologic conditions in each area.

Mark Larsen noted that while the agencies have reached common ground on certain components—such as how to define significant and unreasonable subsidence—discrepancies remain in monitoring approaches and thresholds for action. These differences are being worked through via technical work groups and legal review.

Tom outlined that as part of this regional effort, the best new management practices (BMPs) are being reviewed for incorporation into GKGSA's Subsidence Management Plan. These BMPs focus on high-risk areas and include:

- Detailed inventory and mapping of high-capacity wells near critical infrastructure,
- Encouraging voluntary pumping reductions in identified "hot zones,"
- Promoting shallow well pumping where feasible, and
- Implementation of remote sensing tools and more frequent elevation surveys to track land movement in real time.

Stakeholder participation was emphasized as key to success. Tom and General Manager Larsen committed to holding targeted outreach sessions in high-risk zones, including direct communication with landowners and well operators. Feedback from these efforts will be incorporated into final management actions, which may include pumping restrictions in the lower aquifer starting in Water Year 2027.

July 28, 2025

The agency is also preparing for a formal land subsidence management program to launch in 2026. This program will include mandatory well registration, increased reporting requirements, and coordination with DWR on monitoring tools and modeling integration.

xi. GKGS STATUS REPORT:

The items were covered earlier in the meeting, with a note that the board summary is in the packet for review.

xii. NEXT MEETING:

The next meeting scheduled will be held on Monday, August 25, 2025.

ADJOURNMENT

Chari Tantau announced that a review of the water transfer policy will take place at the next meeting. The discussion will include:

- Opportunities to increase flexibility in transferring water credits.

There being no further business, the meeting was adjourned.

Respectfully Submitted,

Mark Larsen, Combined RCC & SC Secretary

TECHNICAL MEMORANDUM



4CREEKS

To: Greater Kaweah GSA Board of Directors

From: Don Tucker – 4Creeks, Inc.

cc: Mark Larsen – GKGSA General Manager
David De Groot – 4Creeks, Inc

Date: August 11, 2025

Re: Greater Kaweah GSA – Water Year 2026 Groundwater Allocations

In accordance with the current amended Greater Kaweah Groundwater Sustainability Agency (GKGSA or GSA) Rules and Regulations adopted by the Board of Directors, the following technical memorandum summarizes the recommended Water Year 2026 (October 2025 through September 2026) groundwater allocations made available for landowners within the GSA. Article IV. Allocation of Water, Section 4.02 Determination of Allocations of the Rules and Regulations states the following:

“Each year prior to, or as soon as practical, October 1, the GKGSA Technical Group shall determine the allocations available for use within the GKGSA’s various Management Areas based on the data and calculations and the approved methodologies provided herein. The General Manager shall cause such determination to be noticed to all affected Owners prior to October 1, or as close as practical.”

Categories of groundwater allocation within the GSA include the following:

1. Net Sustainable Yield
 - A. Native Sustainable Yield
 - B. Total Precipitation
2. Temporary Tier 1 and Tier 2

The two water categories are described along the proposed allocation amount available to GKGSA landowners.

Sustainable Yield Allocation

A) Native Sustainable Yield - Landowners within the Kaweah Subbasin share native, natural occurring waters, comprised of mountain block inflow recharge from the Sierra Nevada’s and natural channel loss from the Kaweah River. This water is referred to as Native Sustainable Yield and when equally shared among gross lands within the Kaweah Subbasin and is derived from the Kaweah Subbasin Water Accounting Framework (WAF). For Water Year 2026 the Native Sustainable Yield allocation amounts to **0.62 acre-feet per acre is available for consumptive use.**

B) Total Precipitation - Landowners receive credit for the Total Precipitation based on 25-year rolling average (1999-2025), using calibrated weather station data collected within and adjacent to the GSA and allocated at a Public Land Survey System (PLSS) township-range-section basis. For the Water Year 2026 Total Precipitation allocations range from **13 inches (east) to 6 inches (west) per acre**.

Temporary Tier 1 & Tier 2 Allocation

The GSA recognizes that in order to avoid substantial economic impact, a reasonable timeframe is required for landowners to adjust from historical groundwater overdraft to a sustainability. The GSA has adopted a ramp-down schedule for landowners to transition to sustainability, referred to as Tier 1 & Tier 2 Temporary Water. The adopted ramp-down schedule for Tier 1 & Tier 2 Temporary Water is provided as **Table 1**.

Table 1 - GK GSA Temporary Water Rampdown Schedule

Water Years	Tier 1	Tier 2	Total Allowable
2023-2025	40%	50%	90%
2026-2030	40%	30%	70%
2031-2035	20%	20%	40%
2036-2040	20%	0%	20%

The Tier 1 & Tier 2 Temporary Water allocations are based on historical volumes of groundwater overdraft, calculated using the average annual change in groundwater storage from water years 2010-2022, amounting to 124,600 acre-feet.

In reference to the ramp-down schedule, Water Year 2026 represents the first year of the 70% total allowable Temporary Water allocation (30% Tier 1 & 40% Tier 2). The total allowable volume Temporary Water allocation amounts to 87,220 acre-feet (49,840 acre-feet of Tier 1 & 37,380-acre-feet of Tier 2). Divided by 161,100 acres of irrigated acres in the GSA, the acre-foot per acre allocation amounts to 0.54 acre-feet per acre (0.31 acre-feet per acre of Tier 1 & 0.23 acre-feet per acre of Tier 2).

Table 2 - Water Year 2026 Temporary Water Allocation

	Tier 1	Tier 2	Total Allowable
Total Allowable (acre-feet)	49,840	37,380	87,220
Per Acre (acre-feet/acre)	0.31	0.23	0.54

Summary of Water Year 2026 Groundwater Allocation

Table 3 summarizes the Water Year 2026 groundwater allocations for the Greater Kaweah GSA.

Table 3 - Summary of Water Year 2026 Groundwater Allocations

Groundwater Allocation Category	Acre-feet per Acre
1) Sustainable Yield	0.62 + Total Precipitation
<i>A) Native Sustainable Yield</i>	<i>0.62</i>
<i>B) Total Precipitation (25-year rolling average)</i>	<i>Varies</i>
2) Temporary Water	0.54
<i>Tier 1</i>	<i>0.31</i>
<i>Tier 2</i>	<i>0.23</i>
Total WY 2026 Groundwater Allocations	1.16 + Total Precipitation

TECHNICAL MEMORANDUM

August 13, 2025

To: Mark Larsen, GKGSA General Manager
From: Don Tucker – 4Creeks, Inc.
cc: David De Groot – 4Creeks, Inc



Subject: Greater Kaweah GSA – Water Year 2026 Precipitation Allocation

This technical memorandum describes the 2026 Water Year Precipitation Allocation for the Greater Kaweah GSA.

Allocate 25 year Rolling Average Precipitation

Article IV. 4.03(a)1. (B): Precipitation [Allocation]

Precipitation is calculated as the 25-year rolling average total precipitation for the entire GKGSA jurisdictional area. The long-term average is based on precipitation data collected from calibrated weather stations within and adjacent to the GKGSA, allocated to a precipitation zone which varies from west to east. Precipitation allocations by zone will be provided by the technical consultant prior to each water year.

The 25-year precipitation data date range for the Water Year 2026 allocation include precipitation data from 1999 through 2025 collected at calibrated Department of Water Resources (DWR), California Irrigation Management Information System (CIMIS) and LandIQ weather stations shown on **Exhibit A**.

Allocation Zones

To account for the variability in precipitation from the eastern (13 inches) to western (6 inches) portions of the GKGSA, allocation zones have been developed for allocating precipitation as shown in **Exhibit A**. Each zone represents 1-inch intervals based on the 25-year rolling average precipitation contours. Allocation zones are defined to the nearest Public Land Survey System (PLSS) Section boundary.

Exhibit B list Water Year 2026 precipitation allocations in inches by PLSS Section and Assessor Parcel Number (APN).

Landowners can calculate their total precipitation credit in acre-feet by APN as described below:

1. Locate APN in Exhibit B and the corresponding 2026 WY precipitation allocation in **INCHES**.
2. Divide the precipitation allocation in **INCHES** by 12 to convert to **FEET**.
3. Multiple precipitation allocation in **FEET** by gross acreage of parcel to determine APN **ACRE-FEET** allocation.

Greater Kaweah GSA

WY 2026
Precipitation
Allocation
by Zone

Legend

- County Boundary
- Kaweah Subbasin
- Greater Kaweah GSA
- Friant-Kern Canal
- Waterways
- Major Roads
- Weather Stations Used in Analysis

Precipitation Zones

- 6"
- 7"
- 8"
- 9"
- 10"
- 11"
- 12"
- 13"

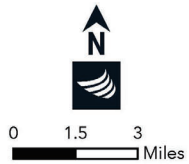
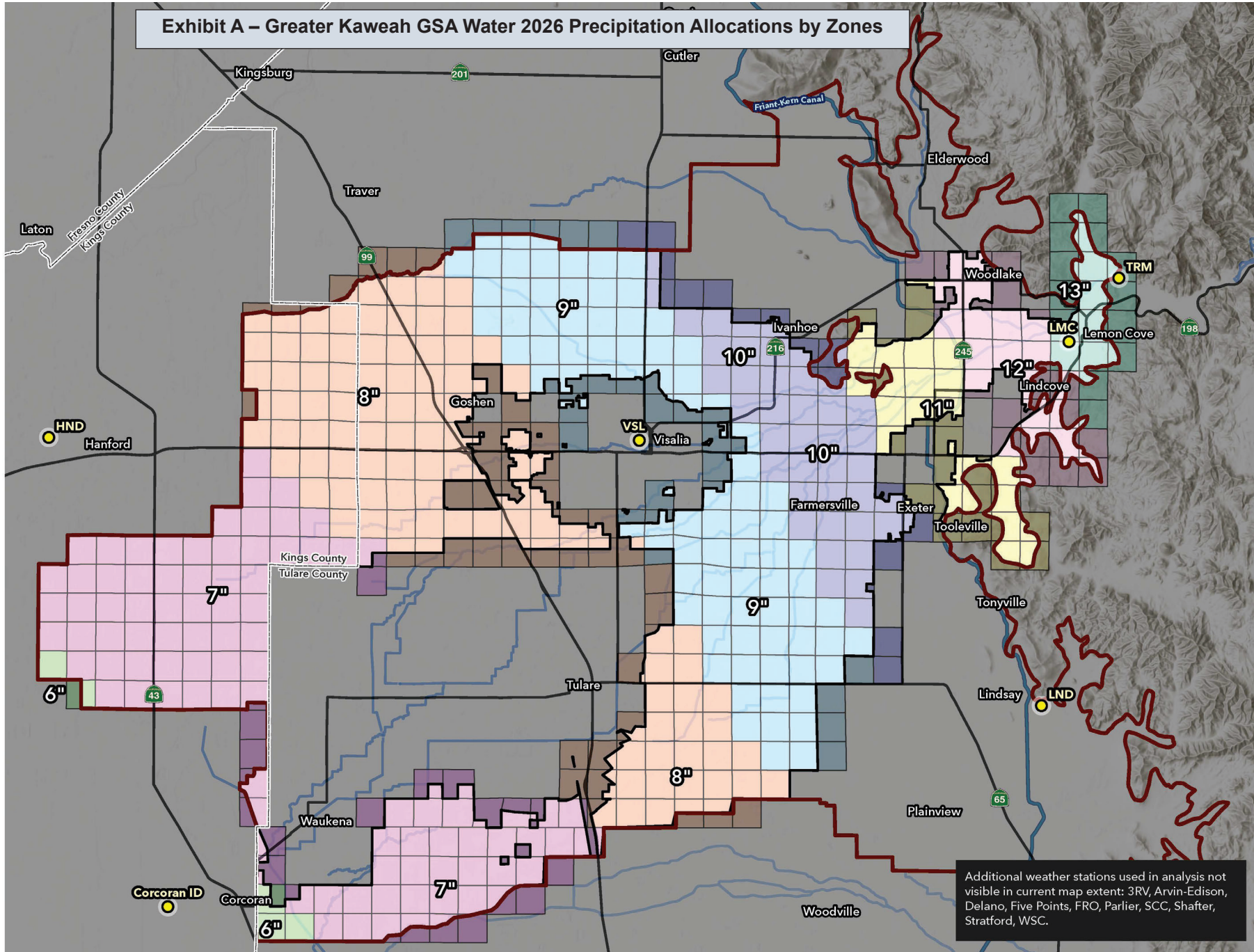


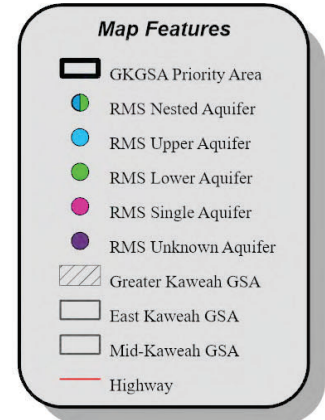
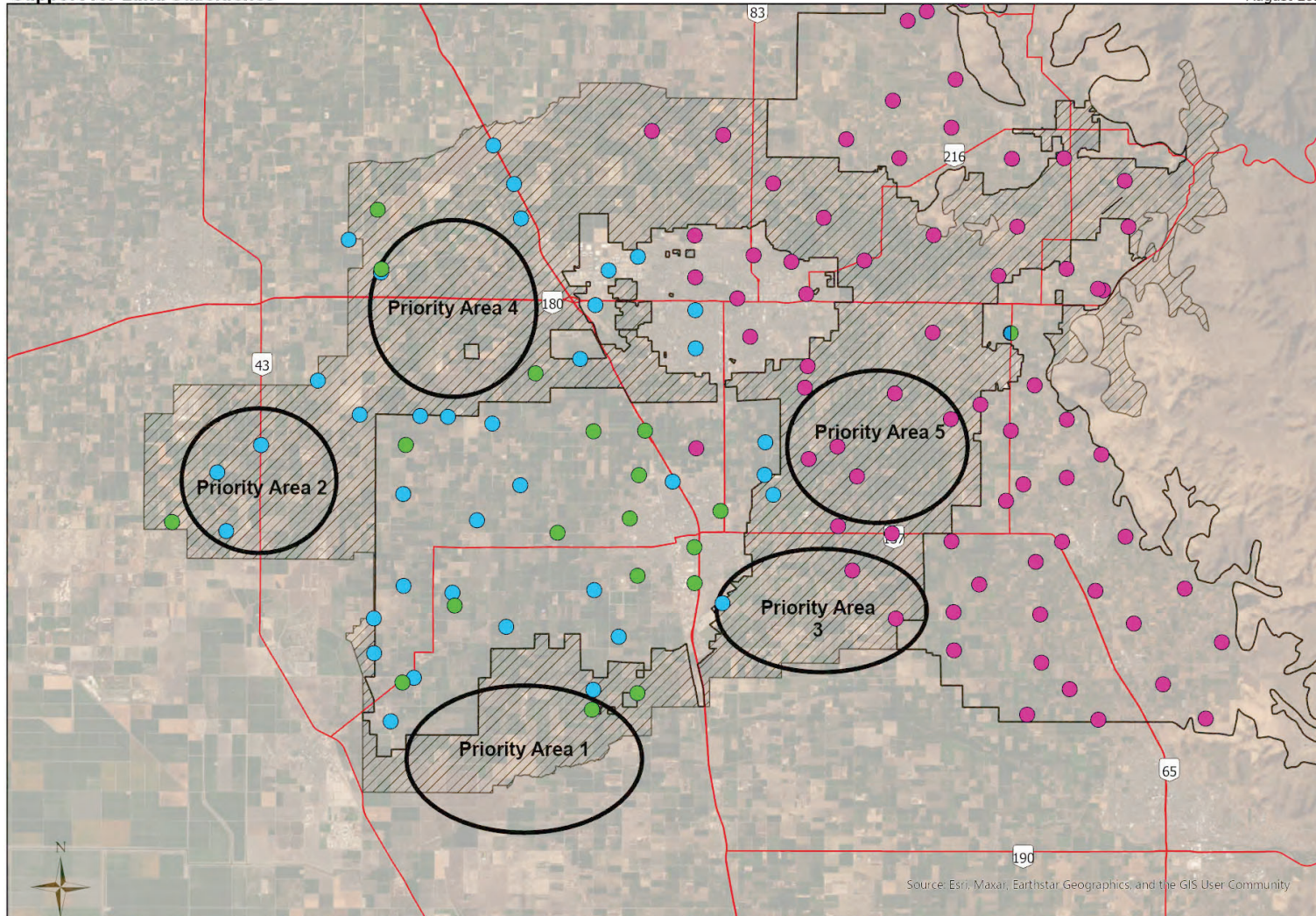
Exhibit A – Greater Kaweah GSA Water 2026 Precipitation Allocations by Zones



Additional weather stations used in analysis not visible in current map extent: 3RV, Arvin-Edison, Delano, Five Points, FRO, Parlier, SCC, Shafter, Stratford, WSC.

Greater Kaweah GSA
Support for Land Subsidence

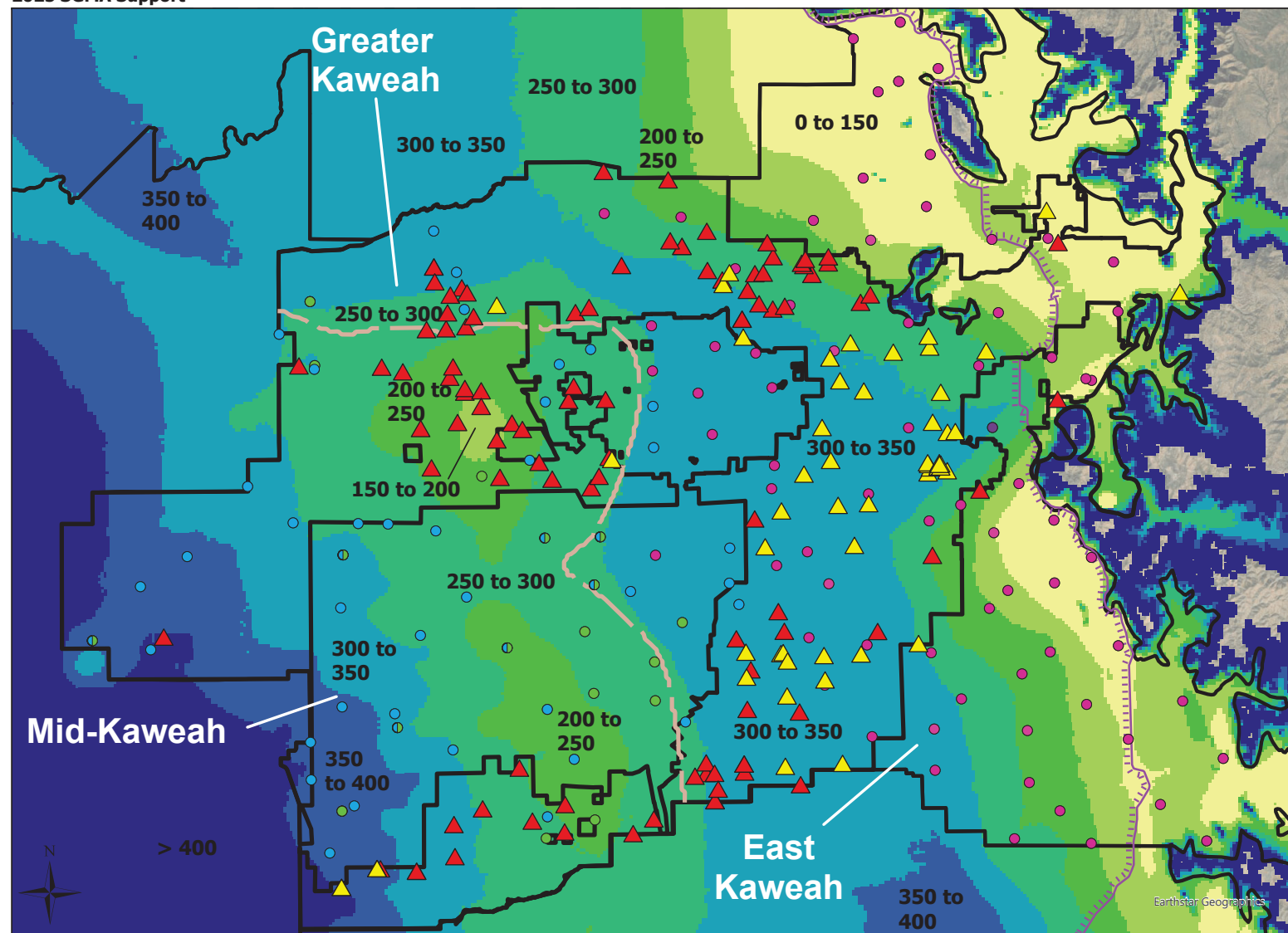
August 2025



DRAFT

DRAFT
Figure 2

Greater Kaweah GSA
2025 SGMA Support



Map Features

- ▲ Upper Aquifer Well
- ▲ Lower Aquifer Well
- RMS Nested Aquifer
- RMS Upper Aquifer
- RMS Lower Aquifer
- RMS Single Aquifer
- RMS Unknown Aquifer

Depth to Corcoran Clay (ft bgs),
Bottom of Upper Aquifer

- < 150
- 150 to 200
- 200 to 250
- 250 to 300
- 300 to 350
- 350 to 400
- > 400

Corcoran Clay Extent

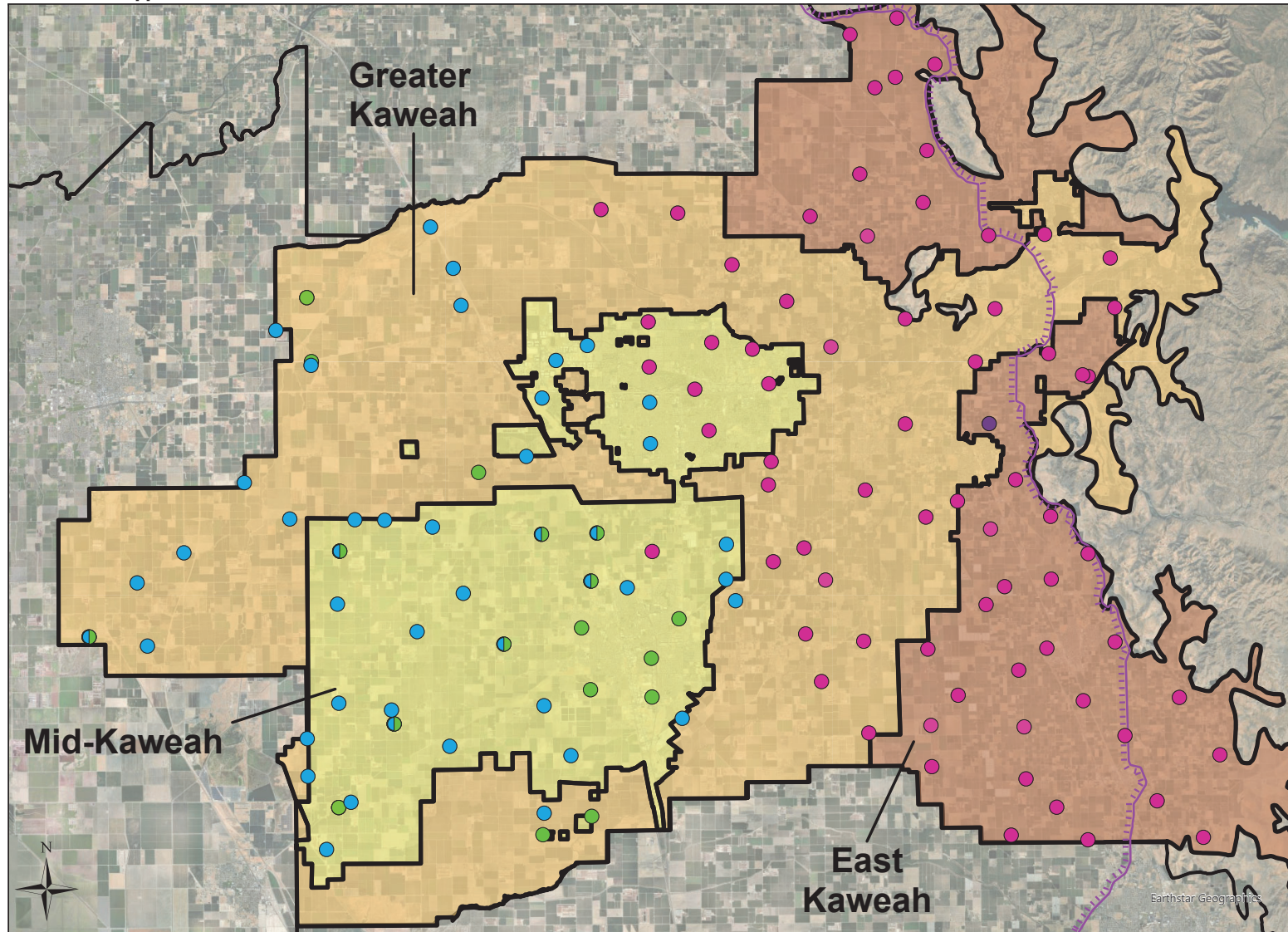
Major Canal

Notes: No composite wells are plotted.
Potential monitoring wells are from Tulare
County and other databases. RMS wells are
from the Montgomery & Associates (M&A)
DMS (Data Management System).







**Existing Wells for
Potential Monitoring**

Greater Kaweah GSA
2025 SGMA Support

DRAFT
Figure 1



Map Features

-  RMS Nested Aquifer
-  RMS Upper Aquifer
-  RMS Lower Aquifer
-  RMS Single Aquifer
-  RMS Unknown Aquifer
-  Major Canal

Note: RMS data is from Montgomery & Associates (M&A) Data Management System (DMS).

**Kaweah Subbasin-
Groundwater Level RMS Wells**



MEMORANDUM

FROM: Mark Larsen

DATE: August 11, 2025

SUBJECT: Board Notes

CC:

Committee Updates:

TAC: Meeting held July 17, 2025. Next meeting August 21, 2025.

Combined Rural Communities & Stakeholder Committees: Met July 28, 2025. Next meeting August 25, 2025.

Kaweah Subbasin Management:

Larsen reported on grant status, LandIQ/Water Dashboard progress, and the MLRP application process.

Land-Based Assessment Resolutions:

The Board approved annual resolutions establishing assessment rates for Tulare and Kings Counties.

Penalty Enforcement:

The Board set October 13, 2025 as the public hearing date to address approximately 95 delinquent Tier 1 and Tier 2 penalty accounts.

Dashboard Groundwater Invoicing:

Staff reported that collections for WY 2023 and 2024 are slowing, though some payments continue to be received.

WY 2025 Allocations:

Don Tucker (4Creeks) presented allocation amounts:

Native Sustainable Yield: 0.62 ac-ft/acre

Tier 1 Penalty: 0.31 ac-ft/acre

Tier 2 Penalty: 0.23 ac-ft/acre

Precipitation Range: 0.5–1.0 ac-ft/acre depending on location
→ Total allocation range: 1.66–2.24 ac-ft/acre.

Mitigation Plan:

Larsen reported on well mitigation progress and reviewed costs for the first pilot project. No new dry well claims were received.

Land Fallowing Program:

The Board approved the 2026 Program with up to \$1 million in funding at a fixed price of \$400/acre.

Monitoring Well Network:

Tom Harder presented priority monitoring well locations and sighting his considerations. Work continues to identify additional well sites.

Kaweah Subbasin GSPs:

Larsen noted anticipated State Board recommendations this fall to return the Subbasin to DWR. DWR also released draft BMPs on land subsidence, which the Subbasin plans to comment on.

Well Data Monitoring System (DMS):

The Board reviewed Task Order 10 Amendment related to Mid-Kaweah GSA cost-sharing.

Well Registration:

GKGSA continues forward with verification of well locations; EKGSA has slowed its program, while Mid-Kaweah proceeds.

Kaweah/Tule Water Banking Project:

The Board approved a Memorandum of Understanding with Lower Tule River Irrigation District for a Cross Valley Banking Investigation.