



**GREATER KAWEAH  
GROUNDWATER  
SUSTAINABILITY  
AGENCY**

[www.GreaterKaweahGSA.org](http://www.GreaterKaweahGSA.org)

# **Greater Kaweah GSA Board Meeting**

Tuesday, November 12, 2019

1

## **PUBLIC COMMENT**

## **ANNOUNCEMENTS**

## **APPROVAL OF MINUTES**

2

## **ITEM 5: Subbasin and Committees Reports**

- October 16, 2019 Subbasin Management Team Committee meeting – updates on Coordination Agreement, County Coordination, Grants/Studies/Reports
- RCC/SC meeting October 28, 2019 – GSP overview, update on comments coming in, communication and outreach activities, committee terms and vacancies
- TAC reviewed Modeling report and DMS memo – October meeting canceled

3

## **ITEM 6: Public Review Draft GSP Schedule**

- Board approval of Public Review Draft GSP schedule on September 9<sup>th</sup>
- 90-day notice issued for public hearing ending on December 16<sup>th</sup>
- Schedule allows 1+ months to address comments (comments will be addressed as they come in) followed by adoption and submission to DWR
- DWR is required to establish its own GSP public comment period of no less than 60 days for an adopted plan
- A GSP that is determined to be incomplete after the deadline may be revised and resubmitted to DWR within 180 days from the date DWR issues the assessment

4

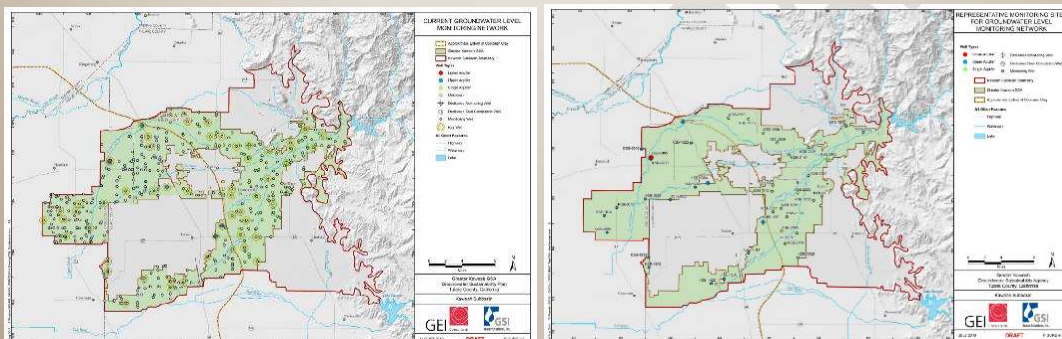
## ITEM 6: GSP Public Review Draft Executive Summary & Sections

1. **Section 1** provides introductory information about the GKGSA and its jurisdictional area, including land use, water use, wells, and other characteristics, outreach to stakeholders, and the organization of the GSP.
2. **Section 2** provides summary information for the GKGSA portion of the Basin Setting Report, which was developed for the entire subbasin. The basin setting is comprised of a hydrogeologic conceptual model, groundwater conditions, and a water budget.
3. **Section 3** provides the Sustainability Goal and defines the undesirable results for the sustainability indicators (four of six) for the Kaweah Subbasin. These overarching definitions were developed by the three GSAs and are fundamental to the required Coordination Agreement

5

## ITEM 6: GSP Public Review Draft Executive Summary & Sections

4. **Section 4** provides information on the monitoring network for surface water flow, groundwater levels, groundwater quality, and land subsidence for the GKGSA area – 27 surface water gages along the rivers and major creeks, 40 representative wells for groundwater levels, 117 public water supply wells for groundwater quality, and 13 land subsidence monitoring stations.



6

# ITEM 6: GSP Public Review Draft Executive Summary & Sections

5. **Section 5** provides sustainable management criteria (SMC) for the GKGS area, including numeric values for minimum thresholds (MTs) and measurable objectives (MOs) at the various monitoring locations of groundwater levels, storage, and quality and for subsidence plus interim milestones for groundwater levels and storage.

**Table 5-1: Sustainable Management Criteria by Sustainability Indicator**

SMC Summary for GKGS			
Sustainability Indicators	Minimum Threshold	Measurable Objective	Optimal Objective <sup>1</sup>
Water Level Declines	Pre-SGMA floor (2040 Intercept) <sup>2</sup>	2030 Intercept <sup>3</sup>	Water Added (P&MA) <sup>4</sup>
Reduction in Storage	Calculated based on water levels <sup>5</sup>	Calculated based on water levels <sup>5</sup>	Calculated based on water levels <sup>5</sup>
Land Surface Subsidence	Benchmark Surveys	Benchmark Surveys	NA

\* 23 Cal. Code Reg. §354.25(e) provides "An Agency that has demonstrated that undesirable results related to one or more sustainability indicators are not present and are not likely to occur in a basin, as described in Section 354.26, shall not be required to establish minimum thresholds related to those sustainability indicators."

**SMC Summary for GKGS**

Sustainability Indicators	Minimum Threshold	Measurable Objective	Optimal Objective <sup>1</sup>
Water Quality	Reference to other regulators <sup>6</sup>	Reference to other regulators <sup>5</sup>	NA
Seawater Intrusion	Establish non-applicability	Establish non-applicability	NA
Interconnected Surface Waters	Establish non-applicability	Establish non-applicability	NA

<sup>1</sup> Per Section 354.30(g) of the GSP Regulations re improving basin conditions.  
<sup>2</sup> Pre-SGMA floor as determined by representative monitoring sites in Hydrogeologic Zones  
<sup>3</sup> 2030 Intercept of Pre-SGMA floor projection as determined by representative monitoring sites in GSA  
<sup>4</sup> Estimated with by the numerical model or empirical analysis incorporating projects and management actions  
<sup>5</sup> Storage volume changes and associated SMC determined as function of water level changes  
<sup>6</sup> e.g. SWRCS Division of Drinking Water requirements for public supply wells, RWQCS Irrigated Lands Regulatory Program

7

# ITEM 6: GSP Public Review Draft Executive Summary & Sections

6. **Section 6** provides an accounting of various types of water within the Kaweah Subbasin for the three GSAs.

(values in acre-feet)

	Native Water			
	East	Greater	Mid	Total
Percolation of Precipitation (Ag and Native) non-Ag land	23,696	44,213	20,974	88,884
Streambed Percolation from Kaweah River Sources	16,787	31,324	14,800	62,952
Irrigation Return from Pumped Groundwater	41,454	77,501	36,793	155,752
Mountain Front Recharge	14,076	27,970	13,273	56,227
<b>Total Native</b>	<b>96,894</b>	<b>181,017</b>	<b>85,874</b>	<b>363,784</b>
<b>GSA% of Total Native</b>	<b>27%</b>	<b>50%</b>	<b>24%</b>	<b>101%</b>

	Foreign Water			
	East	Greater	Mid	Total
Streambed Percolation from Imported Sources	0	11,730	2,523	14,253
Ditch Percolation from Imported Sources	0	1,234	21,745	22,949
Basin Percolation from Imported Sources	0	1,050	14,336	15,356
Irrigation Return from Imported Sources	12,973	1,241	7,140	20,453
<b>Total Foreign</b>	<b>12,973</b>	<b>15,225</b>	<b>45,713</b>	<b>73,010</b>
<b>GSA% of Total Foreign</b>	<b>17%</b>	<b>21%</b>	<b>63%</b>	<b>101%</b>

	Salvaged Water			
	East	Greater	Mid	Total
Ditch Percolation from Kaweah River Sources	0,333	43,771	34,000	93,488
Additional Storage	228	6,032	5,807	12,815
Showerwater Return Flows	508	2,373	8,491	11,369
Wastewater Treatment Plant Return Flows	1,470	3,129	13,878	18,477
Basin Percolation from Kaweah River Sources	0	18,005	23,479	39,484
Irrigation Returns from Kaweah River Sources	4,555	31,028	11,981	47,574
<b>Total Salvaged</b>	<b>15,593</b>	<b>108,205</b>	<b>89,408</b>	<b>223,205</b>
<b>GSA% of Total</b>	<b>7%</b>	<b>49%</b>	<b>44%</b>	<b>100%</b>

	East	Greater	Mid	Total <sup>1)</sup>
	<b>Grand Total</b>	<b>124,560</b>	<b>305,447</b>	<b>229,992</b>
<b>GSA% of Total</b>	<b>19%</b>	<b>46%</b>	<b>35%</b>	<b>100%</b>

<sup>1)</sup> Excludes net sub-surface inflow of 60 TAF/yr.  
 Note: Data is based on water budget for the period Water Year 1997 to 2017 for the Kaweah Subbasin

8

## ITEM 6: GSP Public Review Draft Executive Summary & Sections

7. **Section 7** provides a description of 16 projects and 12 management actions to enable the GKGSA to succeed. Options include improvements to existing recharge basins, new recharge and storage facilities, changes in operations to gain access to wet-year flows, agricultural and urban conservation, and land fallowing as well as further study of wells and the subbasin plus assistance with impaired wells.

9

## ITEM 6: GSP Public Review Draft Executive Summary & Sections

Project	Agency	GW Levels	Reduction In Storage	Water Quality	Land Subsidence	Estimated Cost
Cross Creek Layoff Basin	KCWD LIWD	+	+		+	\$6.6M
Recharge Basin Improvement	LIWD KCWD KDWCD	+	+	+	+	\$0.8M
New Recharge Basins	LIWD	+	+	+	+	\$21.3M
Delta View Canal	KCWD	+	+	+	+	\$2.5M
Lakeland Canal Deliveries	KCWD CID	+	+		+	\$0.1M
Kings River Floodwater Arrangement	KCWD LIWD	+	+		+	\$0.1M
Kings River Surplus Water	KCWD LIWD	+	+	+	+	\$85K / yr
Fallowing Program	KCWD LIWD	+	+		+	\$0.8M / yr
On-Farm Recharge & Storage	KCWD LIWD	+	+	+	+	
Hannah Ranch Floor Control Project	KDWCD	+	+	+	+	\$6.3M
Pareglen Flood Control & Recharge Project	KDWCD	+	+	+	+	\$1.9M
Ketchum Flood Control & Recharge Project	KDWCD	+	+	+	+	\$0.5M
St. Johns River Water Conservation Project	KDWCD	+	+	+	+	\$2.0M
Basin No. 4 Improvement Project	KDWCD	+	+	+	+	\$0.4M
Peoples Recharge Expansion Project	KDWCD	+	+	+	+	\$0.5M

10

## ITEM 6: GSP Public Review Draft Executive Summary & Sections

Management Action	Agency	GW Levels	Reduction in Storage	Water Quality	Land Subsidence	Estimated Cost
Communication and Engagement	GKGS					\$10K / yr
Terminus Reservoir Reoperation Program	KDWCD					\$0.3M
Groundwater Extraction Measurement Program	GKGS	♦	♦		♦	Not well defined
Well Characterization Program	GKGS					Not well defined
Geophysical Data Survey – Phase I	GKGS					\$0.5M
Geophysical Data Survey – Phase II	MKGS EKGS					\$0.4M
Urban Water Conservation Program	Cities	♦	♦			
Assistance for Impaired Wells	GKGS					Not well defined
Agricultural Water Conservation & Management	GKGS					
Fee & Incentive Program	GKGS					
Groundwater Market	GKGS					
Groundwater Allocation Program	GKGS					

11

## ITEM 6: GSP Public Review Draft Executive Summary & Sections

- 8. Section 8** describes the effort to produce an annual report for submittal to DWR and for the periodic 5-year assessment of the GSP. Each annual report is due on April 1st for the preceding water year.

12

## **ITEM 6: Public Review Draft GSP Comments Received / Expected**

- Tulare Basin Watershed Partnership regarding a need for more robust Climate Change adaptation strategies
- KDWCD numerous minor factual and editorial corrections
- Mid-Kaweah and East Kaweah – minor edits and clarification questions
- Tulare County Farm Bureau comments encouraging flexibility, fairness and protectiveness of agriculture
- Karren Yohannes comments concerning Water Accounting Framework, groundwater allocation and exploration of a water market
- Mostly form comments anticipated that other GSAs have already received from several regional NGOs, State Agencies and Associations

13

## **ITEM 6: Public Review Draft GSP Handling of Comments Received**

- Comments are being input to the website comment form database
- As comments are received, they are being organized by topic and discussed internally
- Minor edits and corrections are being handled administratively
- Comments of a legal nature are being addressed by legal council, technical matters handled by GEI/GSI with TAC input as necessary, and policy issues queued up for discussion with either the Management Team Committee, RCC/SC, or the Board

14



## ITEM 6: Public Review Draft GSP Outreach Update

- Outreach Completed
  - Tulare County Water Commission
  - K&SJRA
  - KDWCD
  - Woodlake City Council
  - Delta View Water Association
  - West Goshen
  - Hypericum
  - Ivanhoe
  - Cal Edison Water Forum
  - Downtown Visalia Rotary
- Outreach Planned
  - Farmersville City Council
  - Farmersville Planning Commission
  - Exeter City Council
  - Lemon Cove?
  - Regional Grower Workshop?

15

## ITEM 7: Financial Strategy

- Public Review Draft GSP
  - \$40 to \$50 million total, proposing \$0 first year
  - Average of \$5 million/yr for Management Actions, proposing \$350k local share first year
- Proposition 218 election campaign February 2020 – June 2020
  - Land/acreage based
  - 5-6 year sunset
  - County Tax Roll paperwork due Summer 2020, first payments received December 2020/January 2021
  - Include Member reimbursement?
- Fiscal Year 2020 Budget
  - Increase assessment from \$650k to \$750k
  - Quarterly call for funds – may reduce subject to Prop 68 planning grant

16



## **ITEM 8: CV-SALTS**

- GKGSA and Kaweah Basin Water Quality Association staff have met several times since 2018
- Involvement in CV-SALTS proposed in Draft GSP as a means to address groundwater quality issues
- Water Quality Association is requesting GKGSA be the applicant in pursuit of grants or other planning dollars to fund the development of a water quality management zone within the Kaweah Subbasin

17

**NEXT MEETING DATE**

**CLOSED SESSION**

**REPORT FROM CLOSED SESSION**

**ADJOURNMENT**

18